



**THE VIEW  
HOSPITAL**

In Affiliation With



**Cedars  
Sinai**

# Executive Health Program

**A family, above all**





**THE VIEW  
HOSPITAL**

In Affiliation With  
 **Cedars  
Sinai**

Book your Executive Health checkup at  
[theviewhospital.com](https://theviewhospital.com) or call **8000777**

# About The View Hospital



The View Hospital is a modern healthcare institution that focuses on world-class clinical excellence with a mission to become the hospital of choice, providing, the highest, measurable care to its clients. Building on its clinical excellence, and international partnership approach with Cedars-Sinai, The View Hospital delivers outstanding clinical expertise, through highly experienced multi-disciplinary professional teams and systems.

Clients will experience a quality-of-care equivalent to or exceeding, that of the very best hospitals around the world. With 240 single private suites, 10 operating rooms, and 23 Intensive Care beds, The View Hospital provides primary, secondary, and tertiary healthcare services. Our Operating Rooms are equipped with the most advanced technology, allowing us to do minimally invasive surgery and imaging during operations. The View Hospital is also equipped with the Da Vinci and Artis pheno robotic equipment which is more precise and enables quicker surgery and with fewer complications resulting in a faster recovery.

The Diagnostic Imaging Department has a 3T MRI and Open MRI, a state-of-the-art 256 CT Scanner, and all standard imaging modalities. There is also a dedicated second CT Scanner and X-Ray imaging room located directly in the Emergency Department, which allows faster diagnosis and treatment planning. Similarly, the Pharmacy and Laboratory Departments are both designed with robotic technology to dispense medications and provide automated blood tests. This technology allows us to provide the highest quality and global safety standards for our patients.

The View Hospital was developed by Elegancia Healthcare, a subsidiary of the publicly listed Estithmar Holding, Q.P.S.C.

# FACTS

---

**240** bed  
En-suite Rooms

---

**3** Royal  
suites

---

**3** Elegant  
presidential  
suites

---

**6**  
Ambassador  
suites

---

**62** VIP  
suites

---

**26** Beds,  
Deluxe  
rooms

---

**103** Beds,  
Private  
en-suite in-  
patient rooms.

---

**6** Labor,  
Delivery and  
Recovery  
rooms

---

**11**  
NICU

---

**8**  
CCU

**12** Intensive  
Care Units

**10**  
Operating  
Rooms



# Executive Health Program

---



A visit to The View Hospital Executive Health program is an investment in your health and wellness. After spending few hours with us, you'll have an in-depth view of your overall health and receive personalized recommendations to improve your wellbeing. Our tailored approach saves you time, as we coordinate all necessary services in one convenient appointment.

## What We Offer

**You'll get high-quality, preventative care specific to your needs that will help us identify and address issues before they become serious. Your executive physical features:**

- Seamlessly coordinated care with all services offered in one visit
- A detailed snapshot of your current health
- Guidance to maintain optimal health for the long term
- Access to the renowned specialists of The View Hospital

# Executive Health Program

## What to Expect During Your Visit

You'll spend a half-day with our team as we partner with you on your healthcare goals:

- **Arrival:** Upon arrival, you'll be greeted and escorted to your exam room right away.
- **Intake:** Our clinical team will perform a physical evaluation and the necessary medical tests which may include hearing, vision, lung function, EKG and lab work.
- **Imaging:** Our staff will escort you to your scheduled imaging studies.
- **Consultation:** You'll spend a full hour with our physician who will take the time to get to know you and address all of your concerns.
- **Lunch:** Lunch will be provided before you leave for the day.
- **Follow-up:** Within a week, you'll receive a detailed follow-up call with your physician to review your test results and recommendations.



## Personalized Care

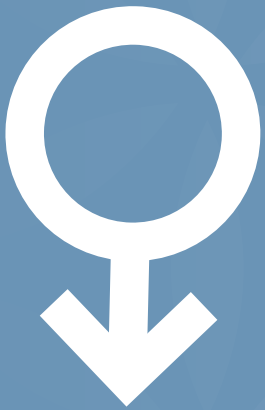
We have two Executive Health options, Essential and Comprehensive, that we can customize to fit your needs. Talk to us about your goals before you schedule a visit so we can guide you to the best option for your unique needs.

Our plans include a thorough physical exam, blood work and imaging studies to screen for a wide range of health concerns, along with:

- Testing to assess your risk of cancer, heart attack, stroke, diabetes and other diseases
- Annual preventative services and screenings like immunizations, mammograms and pelvic and prostate exams
- Mental health assessments for depression and anxiety
- Guidance on recommended follow-up testing, treatment and lifestyle changes

# Male Executive Health Packages

---



## Male

- Essential Examination
- Comprehensive Examination

# Male Executive Health Packages

## Male Essential Examination Package

The Essential Executive Physical is an extensive preventive evaluation targeted toward the busy professional's health, wellness, and longevity. Each physical is curated for the individual with a series of age, gender, and medical history-specific protocols encompassing metabolic assessment, cardiovascular risk profiling, cancer screening, and disease prevention. All services are coordinated in an efficient half day. The physician may recommend certain services on an annual basis or less frequently, as clinically appropriate. Findings from the evaluation will be reviewed with the patient, and the physician will provide guidance on recommended follow-up testing, treatment, or lifestyle change.

### Health Questionnaire

#### Nursing Intake

- Vitals
- Height, weight, BMI (body mass index)
- Fall risk assessment (65+)
- Visual acuity and color blindness
- Audiometry
- Spirometry
- Electrocardiogram (EKG)

#### Mental Health Assessment

- PHQ9 Depression Screening
- GAD7 Anxiety Screening

#### Immunizations

- Influenza (seasonal)

### Comprehensive History and Physical, including:

- IFOBT (50+)
- Prostate and testicular exam

#### Laboratory Analysis

- CBC
- CMP
- Lipid panel
- PSA
- TSH
- Uric acid
- Urinalysis
- CRP
- HbA1C
- Total testosterone

#### Imaging Studies

- Chest X-ray
- Coronary artery calcium scan
- Abdominal aneurysm screening



# Male Executive Health Packages

## Male Comprehensive Examination Package

The Comprehensive Executive Physical is an extensive preventive evaluation targeted toward the busy professional's health, wellness, and longevity. Each physical is curated for the individual with a series of age, gender, and medical history-specific protocols encompassing metabolic assessment, cardiovascular risk profiling, cancer screening, and disease prevention. All services are coordinated in an efficient half day. The physician may recommend certain services on an annual basis or less frequently, as clinically appropriate. Findings from the evaluation will be reviewed with the patient, and the physician will provide guidance on recommended follow-up testing, treatment, or lifestyle change.

### Health Questionnaire

#### Nursing Intake

- Vitals
- Height, weight, BMI (body mass index)
- Fall risk assessment (65+)
- Visual acuity and color blindness
- Audiometry
- Spirometry
- Electrocardiogram (EKG)

#### Mental Health Assessment

- PHQ9 Depression Screening
- GAD7 Anxiety Screening

#### Immunizations

- Influenza (seasonal)
- Tetanus

### Comprehensive History and Physical, including:

- IFOBT (50+)
- Prostate and testicular exam

#### Imaging

- DEXA bone density scan
- Chest X-ray
- Coronary artery calcium scan
- Abdominal aneurysm screening

#### Screening

- Carotid ultrasound

#### Laboratory Analysis

- CBC
- CMP

### Laboratory Analysis (cont.)

- Lipid panel
- PSA
- FSH/LH
- TSH
- Uric acid
- Urinalysis
- CRP
- HbA1C
- Total testosterone
- Vitamin D
- Iron panel and ferritin + B12

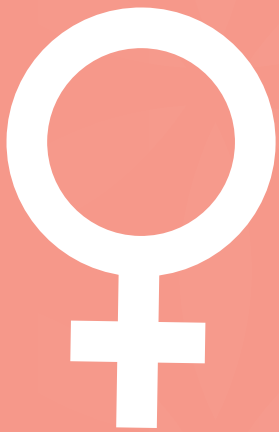
#### Viral serologies

- HIV
- Hepatitis panel

Comprehensive review of results with physician

# Female Executive Health Packages

---



## Female

- Essential Examination
- Comprehensive Examination

# Female Executive Health Packages

## Female Essential Examination Package

The Essential Executive Physical is an extensive preventive evaluation targeted toward the busy professional's health, wellness, and longevity. Each physical is curated for the individual with a series of age, gender, and medical history-specific protocols encompassing metabolic assessment, cardiovascular risk profiling, cancer screening, and disease prevention. All services are coordinated in an efficient half day. The physician may recommend certain services on an annual basis or less frequently, as clinically appropriate. Findings from the evaluation will be reviewed with the patient, and the physician will provide guidance on recommended follow-up testing, treatment, or lifestyle change.

### Health Questionnaire

#### Nursing Intake

- Vitals
- Height, weight, BMI (body mass index)
- Fall risk assessment (65+)
- Visual acuity and color blindness
- Audiometry
- Spirometry
- Electrocardiogram (EKG)

#### Mental Health Assessment

- PHQ9 Depression Screening
- GAD7 Anxiety Screening

#### Immunizations

- Influenza (seasonal)

### Comprehensive History and Physical, including:

- IFOBT (50+)
- Breast exam and pelvic exam with Pap test

#### Laboratory Analysis

- CBC
- CMP
- Lipid panel
- TSH
- Uric acid
- Urinalysis
- CRP
- HbA1C

#### Imaging Studies

- Chest X-ray
- Coronary artery calcium scan
- Abdominal aneurysm screening
- Mammogram

# Female Executive Health Packages

## Female Comprehensive Examination Package

The Comprehensive Executive Physical is an extensive preventive evaluation targeted toward the busy professional's health, wellness, and longevity. Each physical is curated for the individual with a series of age, gender, and medical history-specific protocols encompassing metabolic assessment, cardiovascular risk profiling, cancer screening, and disease prevention. All services are coordinated in an efficient half day. The physician may recommend certain services on an annual basis or less frequently, as clinically appropriate. Findings from the evaluation will be reviewed with the patient, and the physician will provide guidance on recommended follow-up testing, treatment, or lifestyle change.

### Health Questionnaire

#### Nursing Intake

- Vitals
- Height, weight, BMI (body mass index)
- Fall risk assessment (65+)
- Visual acuity and color blindness
- Audiometry
- Spirometry
- Electrocardiogram (EKG)

#### Mental Health Assessment

- PHQ9 Depression Screening
- GAD7 Anxiety Screening

#### Immunizations

- Influenza (seasonal)
- Tetanus

### Comprehensive History and Physical, including:

- IFOBT (50+)
- Breast exam and pelvic exam with Pap test

#### Imaging

- DEXA bone density scan
- Chest X-ray
- Coronary artery calcium scan
- Abdominal aneurysm

#### Screening

- Carotid ultrasound
- Mammogram

#### Laboratory Analysis

- CBC
- CMP

### Laboratory Analysis (cont.)

- Lipid panel
- FSH/LH
- TSH
- Uric acid
- Urinalysis
- CRP
- HbA1C
- Vitamin D
- Iron panel and ferritin + B12

#### Viral serologies

- HIV
- Hepatitis panel

Comprehensive review of results with physician

# Clinical Departments

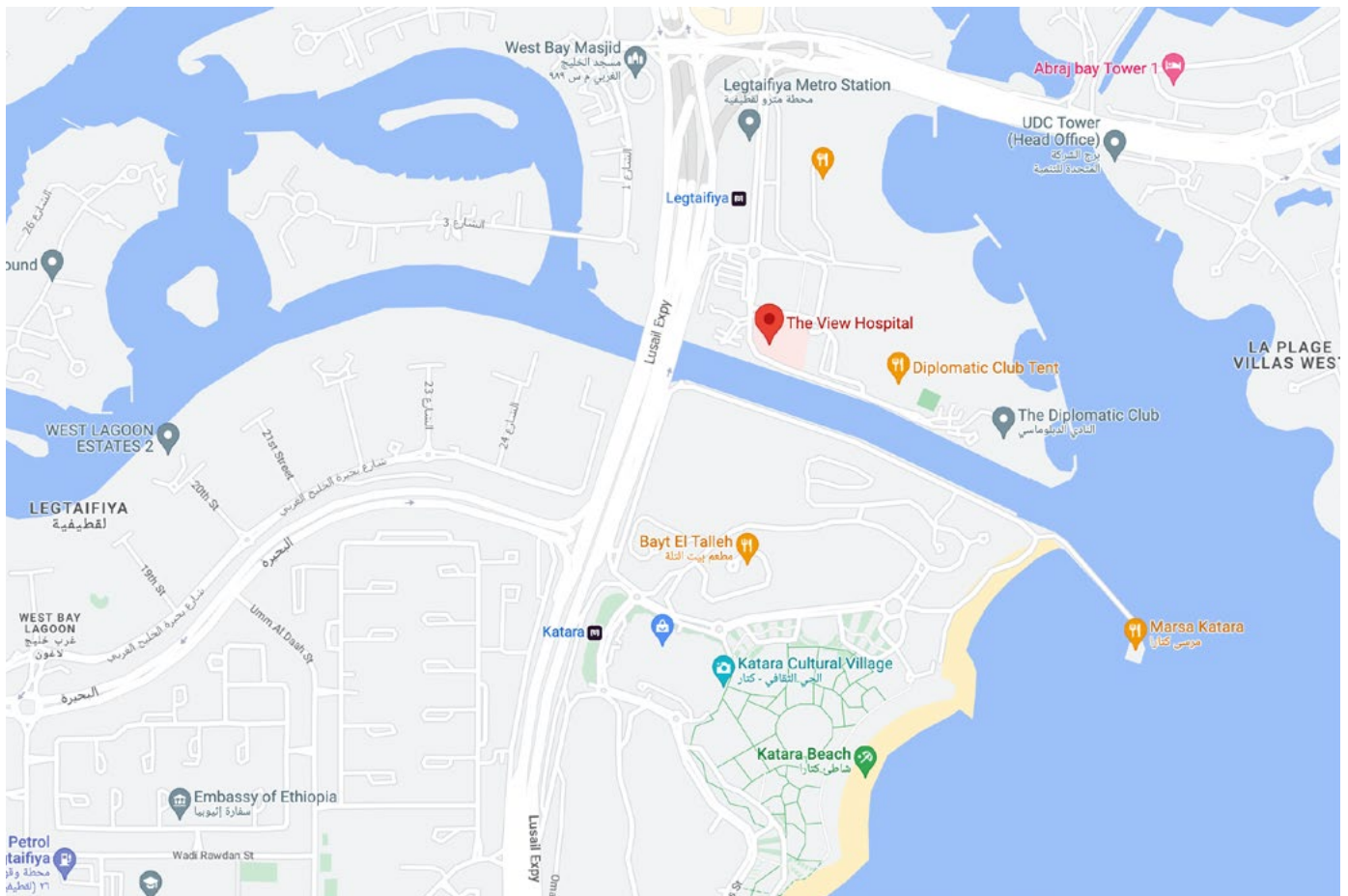


 <b>Emergency Medicine</b>	 <b>Intensive Care Unit</b>	 <b>Neurology</b>
 <b>General Surgery</b>	 <b>Bariatric Surgery</b>	 <b>Cardiology</b>
 <b>Orthopedic Surgery</b>	 <b>Internal Medicine</b>	 <b>Pediatrics</b>
 <b>Ophthalmology</b>	 <b>Otolaryngology</b>	 <b>Gastroenterology</b>
 <b>Rehab Medicine &amp; Physical Therapy</b>	 <b>Pulmonology</b>	 <b>Laboratory Medicine/ Anatomical &amp; Clinical Pathology</b>
 <b>Obstetrics &amp; Gynecology</b>	 <b>Endocrinology</b>	 <b>Urology</b>
 <b>Vascular</b>	 <b>Anesthesiology</b>	 <b>Plastic Surgery</b>
	 <b>Medical Imaging</b>	

# Contact Information



Book Your Appointment On  
**8000777**  
[www.theviewhospital.com](http://www.theviewhospital.com)





**THE VIEW  
HOSPITAL**

In Affiliation With  
 **Cedars  
Sinai**



**THE VIEW  
HOSPITAL**

In Affiliation With  
 **Cedars  
Sinai**

Book Your Appointment On

**8000777**

[www.theviewhospital.com](http://www.theviewhospital.com)